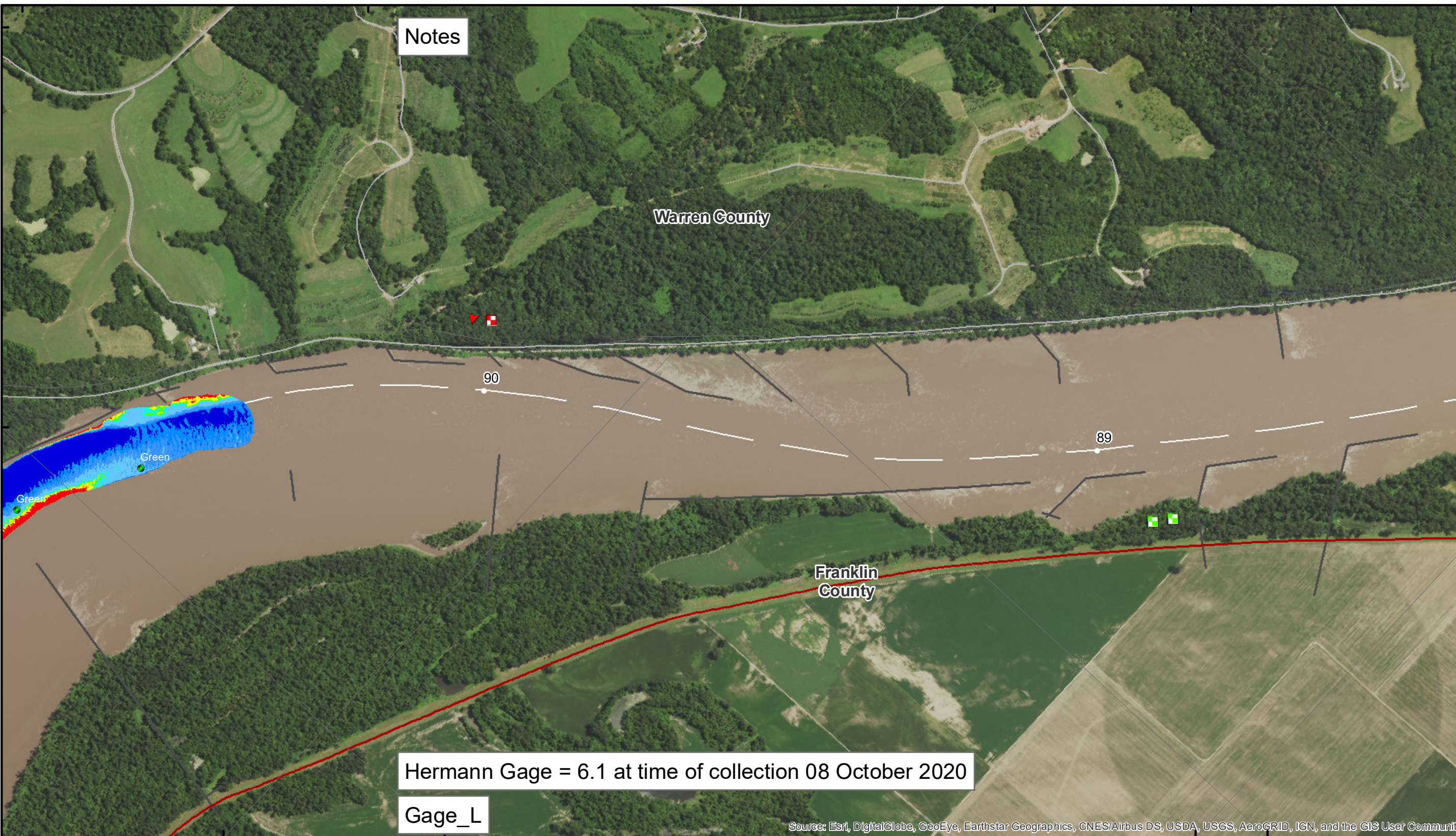


38°43'N 91°18'W 38°41'N 91°17'W



Notes

Warren County

Franklin County

Hermann Gage = 6.1 at time of collection 08 October 2020

Gage\_L

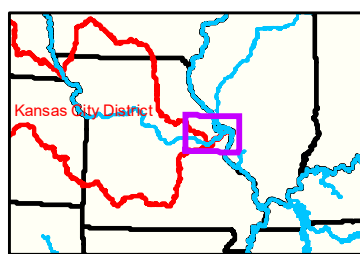
Source: Esri, DigitalGlobe, GeoEye, Earthstar Geographics, CNES/Airbus DS, USDA, USGS, AeroGRID, IGN, and the GIS User Community



**DISCLAIMER:** The U.S. Army Corps of Engineers provides this information as a service to the public. It is not intended for use in any legal proceeding or for any other purpose. The information is provided as is, without warranty. The user assumes all responsibility for any use of the information. The U.S. Army Corps of Engineers is not liable for any damages, including consequential damages, resulting from the use of this information. The information is not to be used for navigation purposes. The information is not to be used for any other purpose. The user assumes all responsibility for any use of the information. The U.S. Army Corps of Engineers is not liable for any damages, including consequential damages, resulting from the use of this information.

KANSAS CITY DISTRICT MISSOURI RIVER AREA OFFICE	
Submitted By:	MRAO
Reviewed By:	MRAO
Checked By:	MRAO

**Survey Information**  
 MO\_01\_LMR  
 MO\_01\_LMRX\_20201008\_CS\_90\_5\_92\_0\_SORT  
 08 October 2020



**LEGEND**

--	--	--

**Buoy**  
 Green CAN  
 Red NUN

Scale: 0 312.5 625 937.5 1,250 2,500 Feet

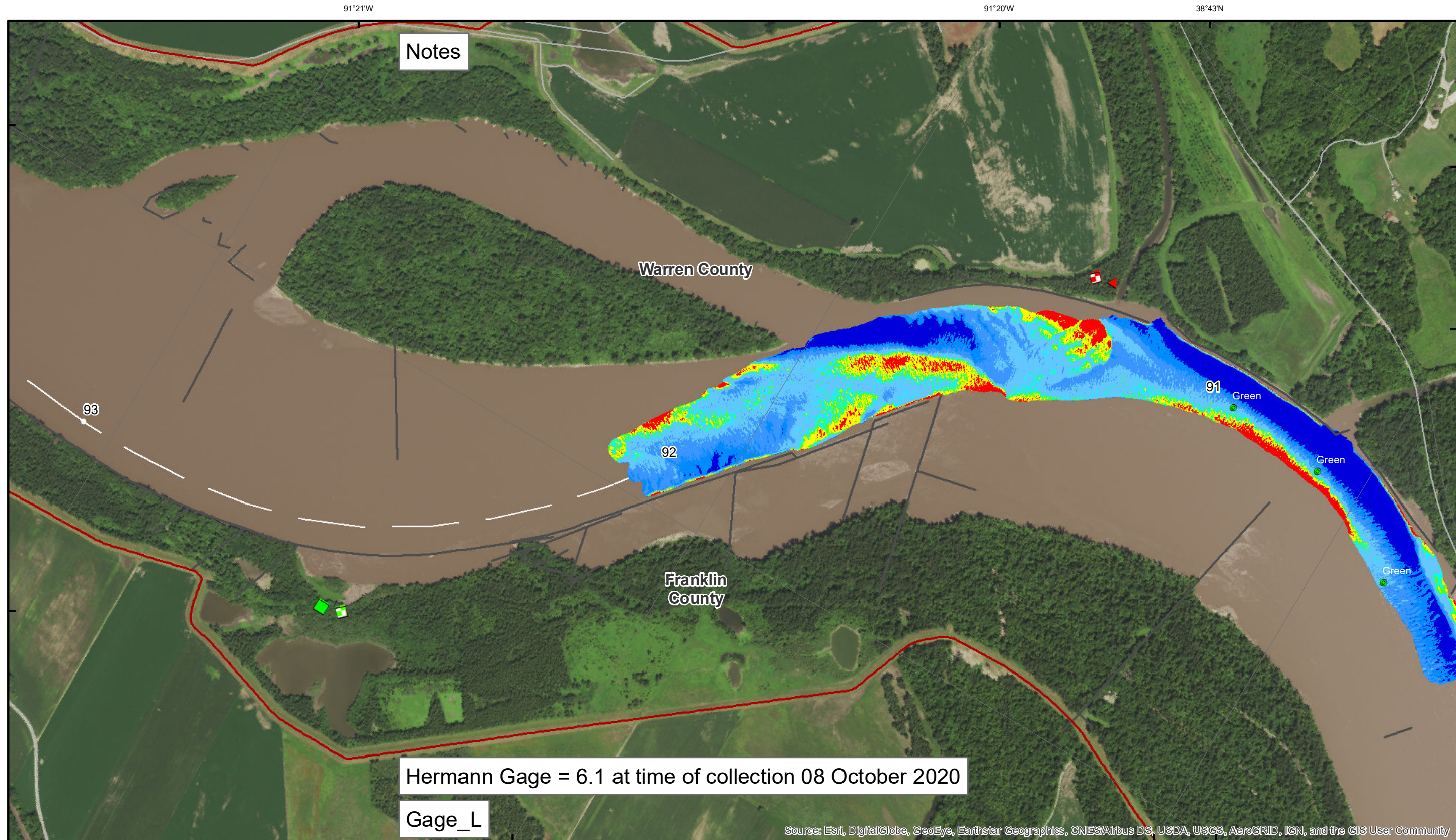
Vertical Datum: Soundings are shown in feet and indicated depths are referenced to water surface at time of collection.

The information depicted on this map represents the results of a survey conducted on the date indicated and can only be considered to represent the general condition existing at that time.

The location of navigation aids are based on and provided by the U.S. Coast Guard.



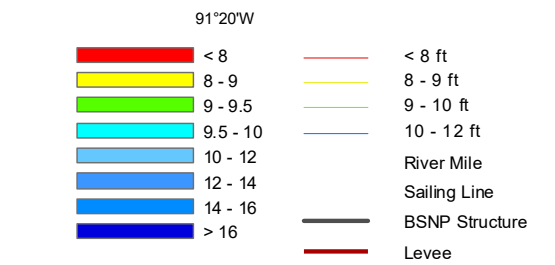
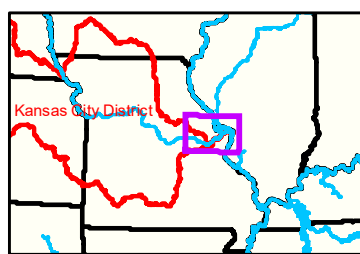
**Sheet Number**  
 41 of 46



**DISCLAIMER:** The U.S. Army Corps of Engineers provides this data as a service to the public and does not warrant the accuracy or completeness of the data. The data is provided as a service to the public and is not intended for use in any legal proceeding. The data is provided as a service to the public and is not intended for use in any legal proceeding. The data is provided as a service to the public and is not intended for use in any legal proceeding.

KANSAS CITY DISTRICT MISSOURI RIVER AREA OFFICE	
Submitted By:	MRAO
Reviewed By:	MRAO
Approved By:	MRAO

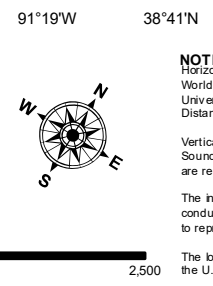
**Survey Information**  
 MO\_01\_LMR  
 MO\_01\_LMRX\_20201008\_CS\_90\_5\_92\_0\_SORT  
 08 October 2020



**LEGEND**

Green Square	Green Passing
Red Triangle	Red Passing
Green Diamond	Green Crossing
Red Diamond	Red Crossing

Buoy	Color	Meaning
Green CAN	Green	Green CAN
Red NUN	Red	Red NUN



**NOTES:**  
 Horizontal Coordinate System: World Geodetic System of 1984 (WGS84), projected to the Universal Transverse Mercator (UTM) Zone 15 North. Distance units in U.S. Survey Feet.  
 Vertical Datum: Soundings are shown in feet and indicated depths are referenced to water surface at time of collection.  
 The information depicted on this map represents the results of a survey conducted on the date indicated and can only be considered to represent the general condition existing at that time.  
 The location of navigation aids are based on and provided by the U.S. Coast Guard.

**Sheet Number**  
 42 of 46

Source: Esri, DigitalGlobe, GeoEye, Earthstar Geographics, CNES/Airbus DS, USDA, USGS, AeroGRID, IGN, and the GIS User Community